



ENGASST

Engineering Assistant

The Department has developed a Windows application called Engineering Assistant (EngAsst) for its engineering software to assist users in preparing their input files, running the engineering program and reviewing the output produced by the engineering program. EngAsst will work with the engineering programs listed in Table 1 on the next page. Sample screen shots of the EngAsst windows are included in Figures 1 through 3.

With EngAsst the user can create a new input file, modify an existing input file, import input files, run the associated engineering program and view the output, all in a Windows environment. The help and documentation are also provided, including text description of each field, relevant images, and extended help text. Access to all parts of the Engineering Program User's Manual, where available, is also provided within EngAsst. EngAsst runs as a 32-bit application and is supported on Windows Vista, Windows 7 and Windows 8 operating systems (both 32-bit and 64-bit versions). EngAsst requires that Adobe Acrobat Reader version 4 or higher, and Microsoft Internet Explorer version 5.5 or higher are already installed on the PC.

EngAsst is available under a separate license agreement. A separate license is required for EngAsst for each site. One license of EngAsst per site will allow all currently licensed engineering programs to be used under EngAsst.

One does not have to use EngAsst in order to run an engineering program, however the input data processor (IDP) program supplied with the original license of the engineering program will no longer be updated, therefore users that do not use EngAsst may have to create their input files using a text editor, such as, Notepad. EngAsst can be ordered using the order form which can be downloaded from the Ordering/Updating link on website <http://penndot.engrprograms.com>.

Direct any questions concerning the above to:

Nicole Avalon | AMS Highway Permit Admin (HPA) Engineer Business Analyst

PA Office of Administration | Infrastructure and Economic Development

Highway/Engineering Applications Division

Bureau of Solutions Management | CAI AMS Highway Admin Team

400 North Street, 5th Floor | Harrisburg, PA 17120

e-mail: c-navalon@pa.gov

PENNDOT Engineering Assistant (EngAsst) Program

The latest version of the engineering programs shown in Table 1 are currently supported by EngAsst. Please refer to the Ordering/Updating page at the web site <http://penndot.engrprograms.com/> for a list of the latest version numbers.

Table 1 PENNDOT Engineering Programs Supported by Engineering Assistant

ABLRFD	BPLRFD	CBA	PS3
ABUT5	BRGEO	CLLMR	PSLRFD
ARCH	BSP	FBLRFD	SIGN
BAR7	BXLRFD	GRPRO	SNLRFD
BOX5	CAMBR	HGEO	STLRFD

If you have the older version of any of these programs, you will have to get the updated version of the program for use with EngAsst. This may require a program update fee in accordance with the original license agreement.

Shown below and on the next page in Figures 1 through 3 are screen shots of some of the Engineering Assistant windows.

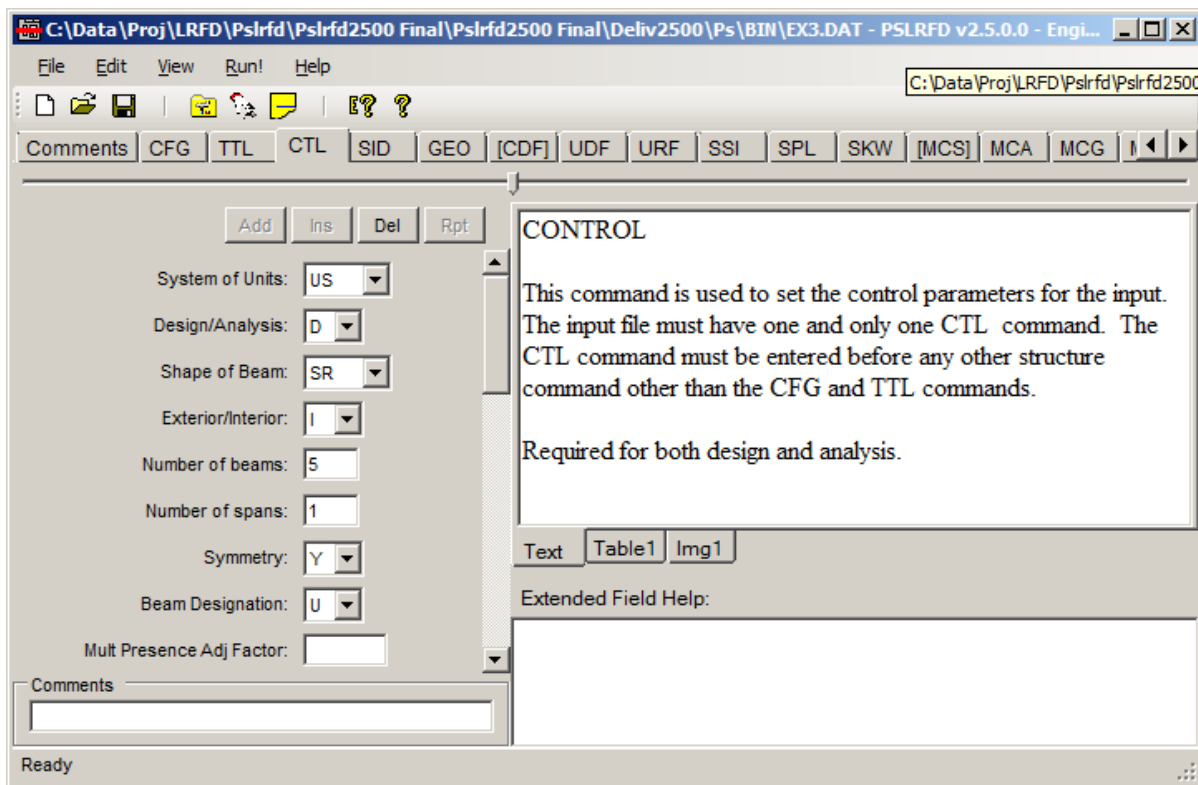


Figure 1 Typical EngAsst Edit Window

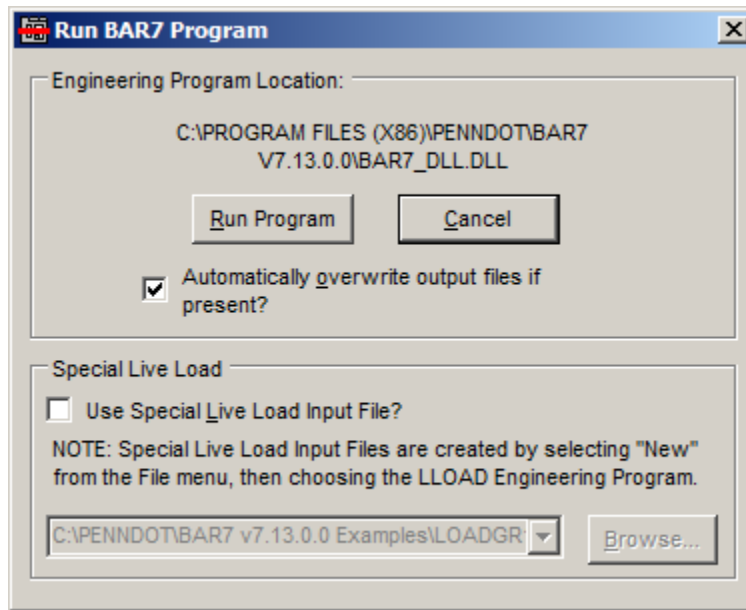


Figure 2 Run Dialog

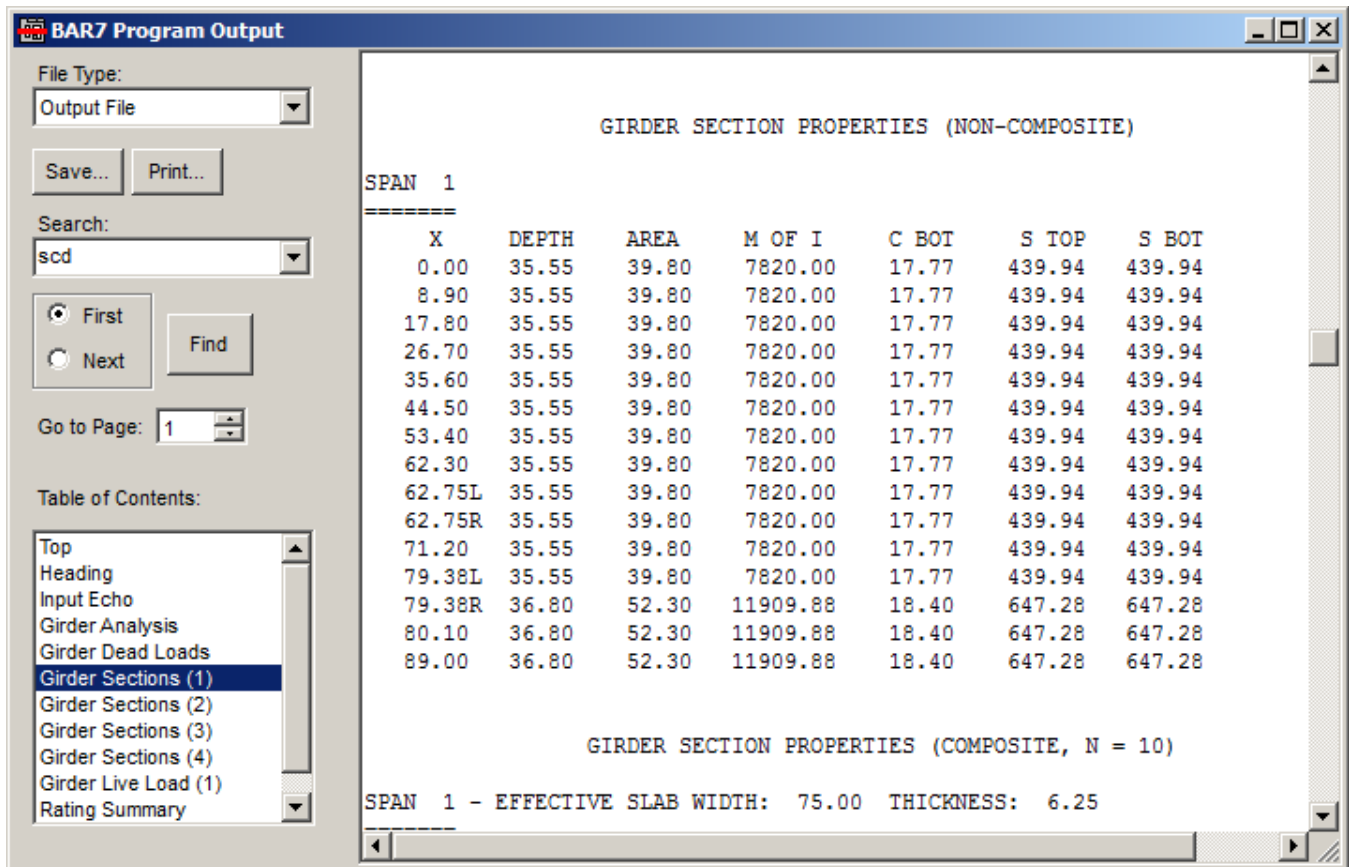


Figure 3 Program Output Window