

PENNDOT e-Notification

Bureau of Information Systems
Application Development Division



ENGASST

No. 001
July 31, 2003

Release of Version 2.0

The Department has developed a Windows application called Engineering Assistant (EngAsst) for its engineering software to assist users in preparing their input files, running the engineering program and reviewing the output produced by the engineering program. EngAsst will work with the engineering program versions listed on the next page. Some sample screen shots of the EngAsst windows are also attached.

With EngAsst the user can create a new input file, modify an existing input file, import input files, run the associated engineering program and view the output, all in a Windows environment. The help and documentation are also provided, including text description of each field, relevant images, and extended help text. Access to all parts of the Engineering Program User's Manual, where available, is also provided within EngAsst. EngAsst runs as a 32-bit application and is supported on Windows NT, 2000 and XP operating systems. EngAsst requires that Adobe Acrobat Reader version 4 or higher, and Microsoft Internet Explorer version 5.5 or higher are already installed on the PC.

EngAsst is available under a separate license agreement for a fee \$300 for private organizations and a fee of \$100 for governmental agencies and educational institutions. A separate license is required for EngAsst for each site. One license of EngAsst per site will allow all currently licensed engineering programs to be used under EngAsst.

One does not have to use EngAsst in order to run an engineering program, but the input data processor (IDP) program supplied with the original license of the engineering program will no longer be updated. The order form, called REQUEST FOR PENNDOT'S LRFD BRIDGE DESIGN SOFTWARE LICENSE, can be downloaded from the web site at <http://penndot.engrprograms.com>.

Direct any questions concerning the above to:

John A. Breon, P.E.

PENNDOT Bureau of Information Systems

Application Development Division

Phone: (717) 787-8406 | Fax: (717) 783-8816

e-mail: jbreon@state.pa.us

Archived copies of all previously distributed e-Notifications can be obtained from the PENNDOT LRFD and Engineering Programs website at <http://penndot.engrprograms.com/home> and clicking on "e-Notification" and then "Mailing List Archives."

The following engineering programs with their version numbers identified below are currently supported by EngAsst Version 2.0.

ABLRFD v1.3	BOX5 v5.8	BXLRFD v1.3	FBLRFD v1.0	PS3 v3.5	STLRFD v1.2
ABUT5 v5.3	BPLRFD v1.2	CAMBR v2.0	GRPRO v1.0	PSLRFD v2.0	
ARCH v1.1	BRGEO v1.1	CBA v3.5	HGEO v1.0	SIGN v1.1	
BAR7 v7.10	BSP v1.3	CLLMR v1.0	PAPIER v1.1	SPLRFD v1.0	

If you have the older version of any of these programs, you will have to get the updated version of the program for use with EngAsst which may require a program update fee in accordance with the original license agreement.

Shown below and on the next page are screen shots of some of the Engineering Assistant windows.

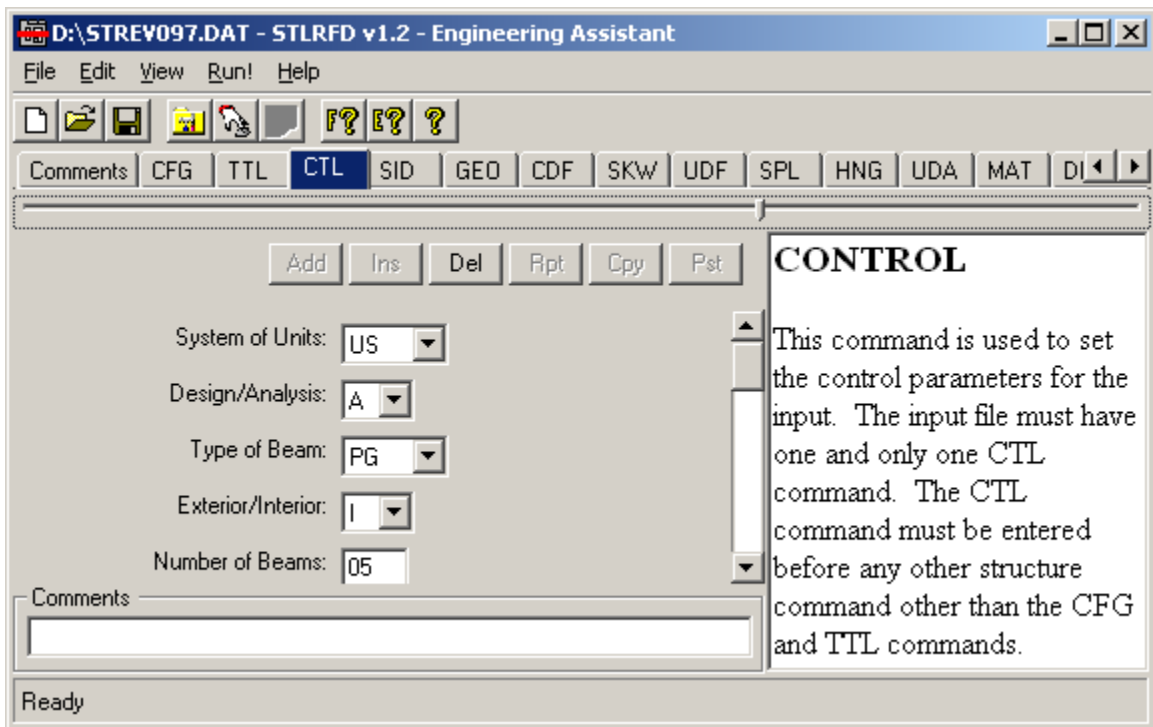


Figure 1 Typical EngAsst Edit Window

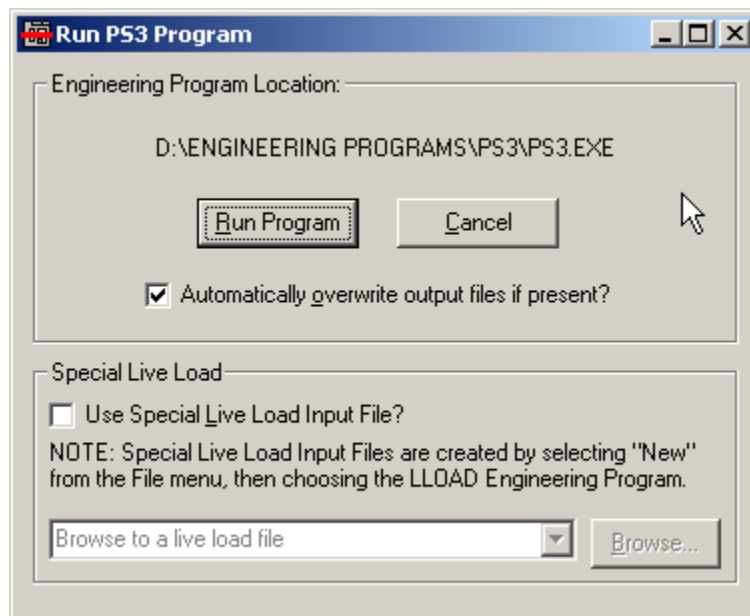


Figure 2 Run Dialog

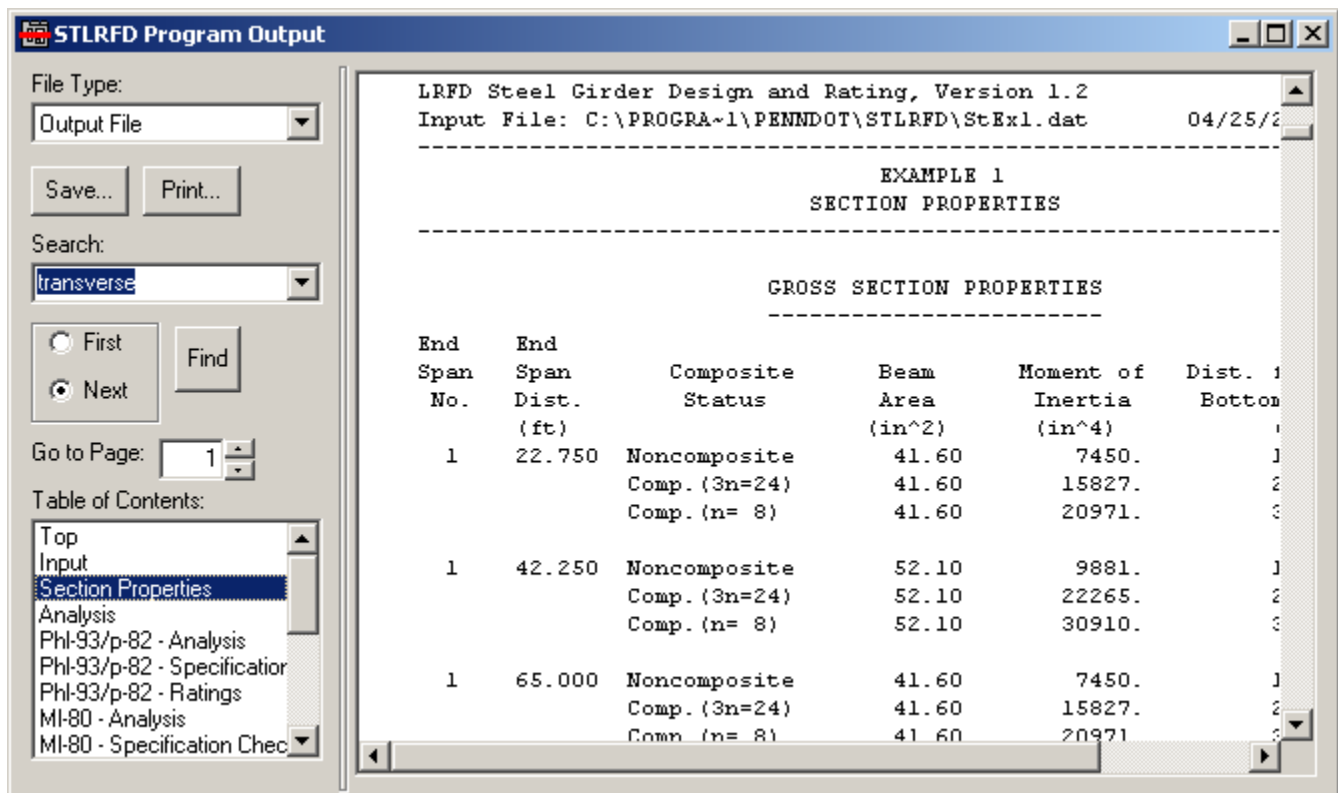


Figure 3 Program Output Form